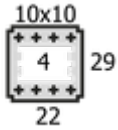


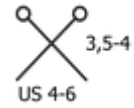
NATURAL BAG

COMPOSITION: 60% Jute, 40% Cotton

CLEW: e 100 grs. - 100 mts. - 3,5 oz. - 109 yds.



Metric 4,5-5
US 7-H/8



A natural yarn made from jute and cotton, **Natural Bag** has a rough texture that is ideal for crocheting to create accessories such as bags, belts, or home decor accessories.



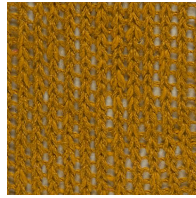
AVAILABLE COLORS



001



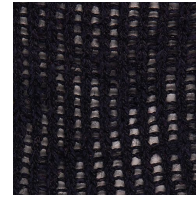
002



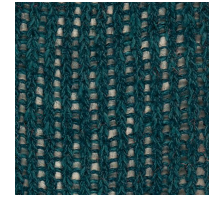
003



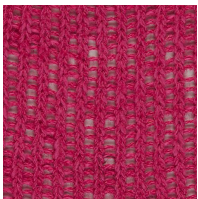
004



006



007



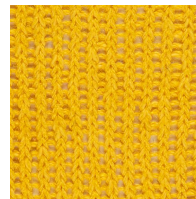
008



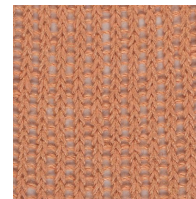
009



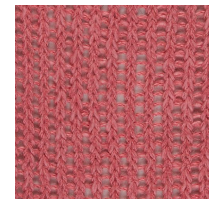
010



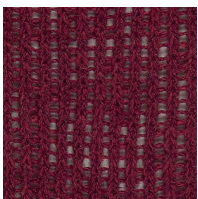
011



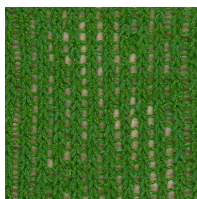
013



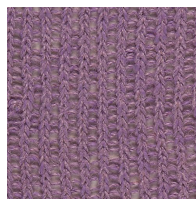
014



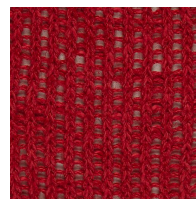
015



017



018



019



030



031



032



033



034

CLOTHING CARE



DRYING
ON A
FLAT
SURFACE
(LYING
DOWN)



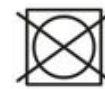
WASH BY
HAND



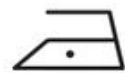
DRY CLEANING WITH
ALL SOLVENTS
EXCEPT
TRICHLOROETHYLENE
OR
TRICHLOROETHYLENE



DO NOT
BLEACH



DOES NOT
WITHSTAND
TUMBLE
DRYING



LOW
TEMPERATURE
IRONING (MAX
110°)